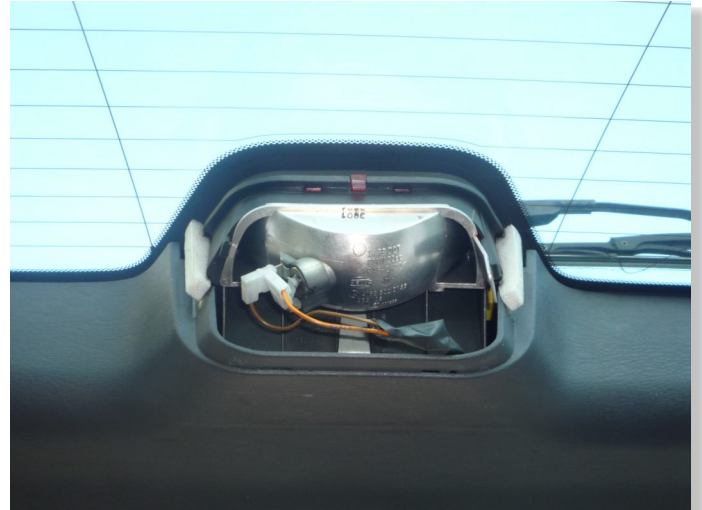


Mercedes ML-Class [W163] 1997-2005

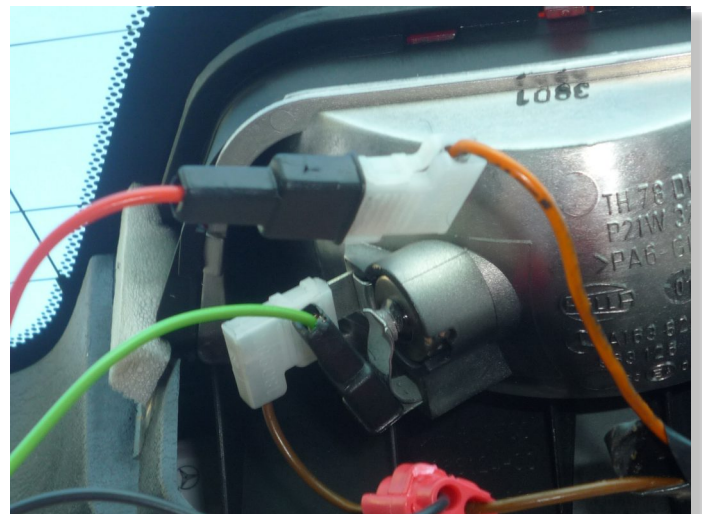


SUPPLEMENTARY MANUAL for BLP-U01

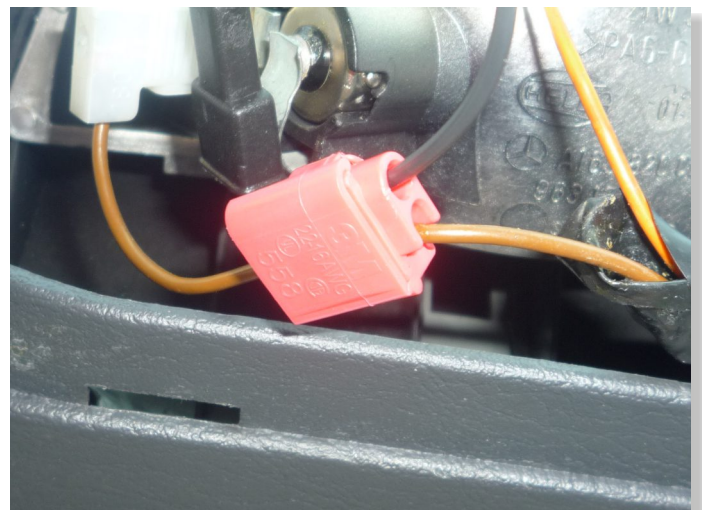
REMOVE THE BLACK PLASTIC COVER
OF THE THIRD BRAKE LIGHT.



CUT THE ORANGE WIRE
OR DISCONNECT THE TERMINAL.
CONNECT THE BLP RED WIRE TO
ORANGE WIRE END, WHICH IS AT
THE WIRING HARNESS SIDE.
CONNECT THE BLP GREEN WIRE TO
ORANGE WIRE END, WHICH GOES TO
THE THIRD BRAKE LIGHT.



CONNECT THE BLP BLACK WIRE
TO BROWN WIRE.



Mercedes ML-Class [W163] 1997-2005



TYPICAL POSITION
FOR BRAKE LIGHT PRO.

