

Suzuki SV650S

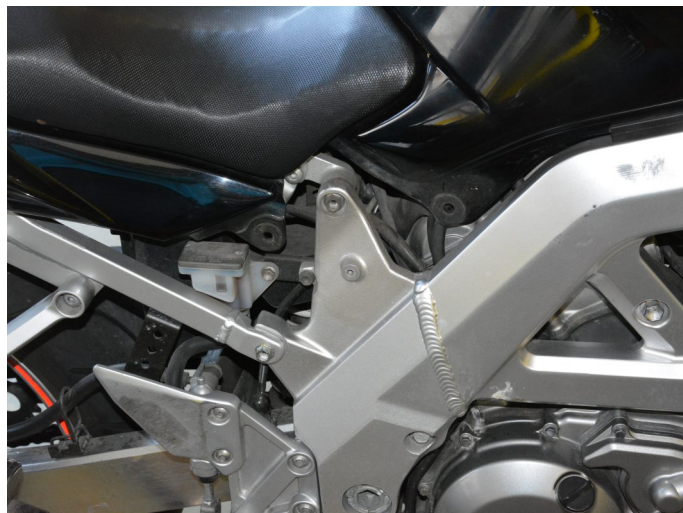
2003-2006



SUPPLEMENTARY MANUAL

for GPAT-S03

REMOVE THE LEFT AND RIGHT
BLACK FRAME COVERS
BELOW THE SEAT.



REMOVE THE MAIN SEAT.



LIFT UP OR REMOVE
THE FUEL TANK.



Suzuki SV650S

2003-2006



**PLUG GPAT G2 CONNECTORS IN-
LINE WITH THE GEAR POSITION
SENSOR CONNECTORS.**

(TRANSPARENT, 4-POLE CONNECTORS
AT THE LEFT SIDE)



**CONNECT GPAT G2 RED WIRE TO
ORANGE WIRE OF
REAR BRAKE LIGHT SWITCH
CONNECTOR.**

(TRANSPARENT, 2-POLE CONNECTOR
AT THE LEFT SIDE)



**TYPICAL POSITION FOR THE
GEAR INDICATOR.**

(TRE MODE: 6TH GEAR MAP)

